



Brookfield Road, London, W4 1DG

Guide Price £1,500,000

**WHITMAN & CO.**

SALES · LETTINGS · COMMERCIAL



- Fully extended and refurbished period property
- 22' Kitchen/breakfast room
- Five beds/two baths
- Private 35' garden
- South facing reception room
- Located close to numerous amenities

Tenure - Freehold  
Local Authority - Ealing  
Council Tax - Band G

## THE PROPERTY

- SOLD - An immaculately presented fully extended and refurbished period property located on this quiet street on the borders of the Bedford Park Conservation Area. The house totals more than 1900sqft with the accommodation comprising a 25'2 through reception room with bay window and wooden floors, a fully extended kitchen/breakfast room with bespoke kitchen and bi-fold doors leading to a private 35' garden, full-width master bedroom, four further bedrooms, family bathroom, ensuite shower room, cloakroom, utility room and eaves storage. Brookfield Road is located within a short walk of Chiswick High Road's shops, cafes and restaurants. Transport links include Turnham Green station, local bus routes and the A4/M4 for routes in and out of London.

## SITUATION



### Brookfield Road, W4

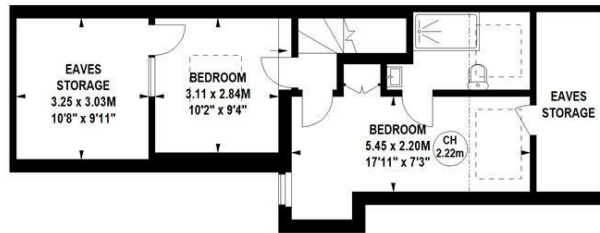
Approximate gross internal area

177.72 sq m / 1913 sq ft  
(Including Eaves Storage)

Eaves Storage

16.16 sq m / 174 sq ft

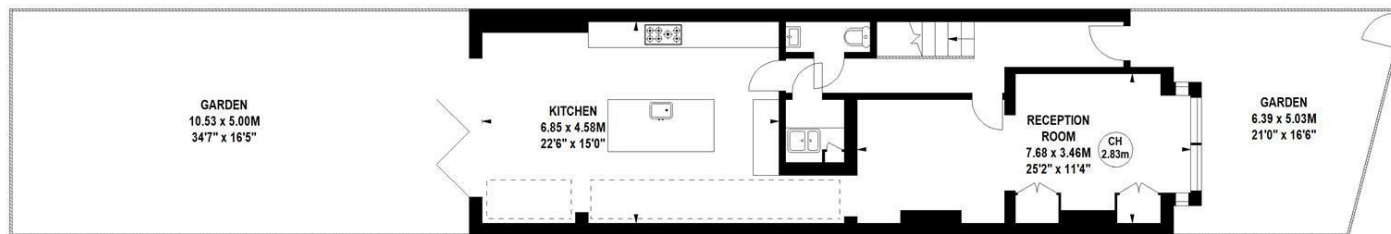
Key :  
CH - Ceiling Height



Second Floor



First Floor



Ground Floor

Not to scale, for guidance only and must not be relied upon as a statement of fact.  
All measurements and areas are approximate only

5-7 Turnham Green Terrace, Chiswick, London, W4 1RG

Tel 020 8747 8800

E-mail sales@whitmanandco.com

Website www.whitmanandco.com

